
SYNERGY IN SCIENCE: The Essential Role Of Networking In Collaboration & Innovation

Adana A. M. Llanos, PhD, MPH

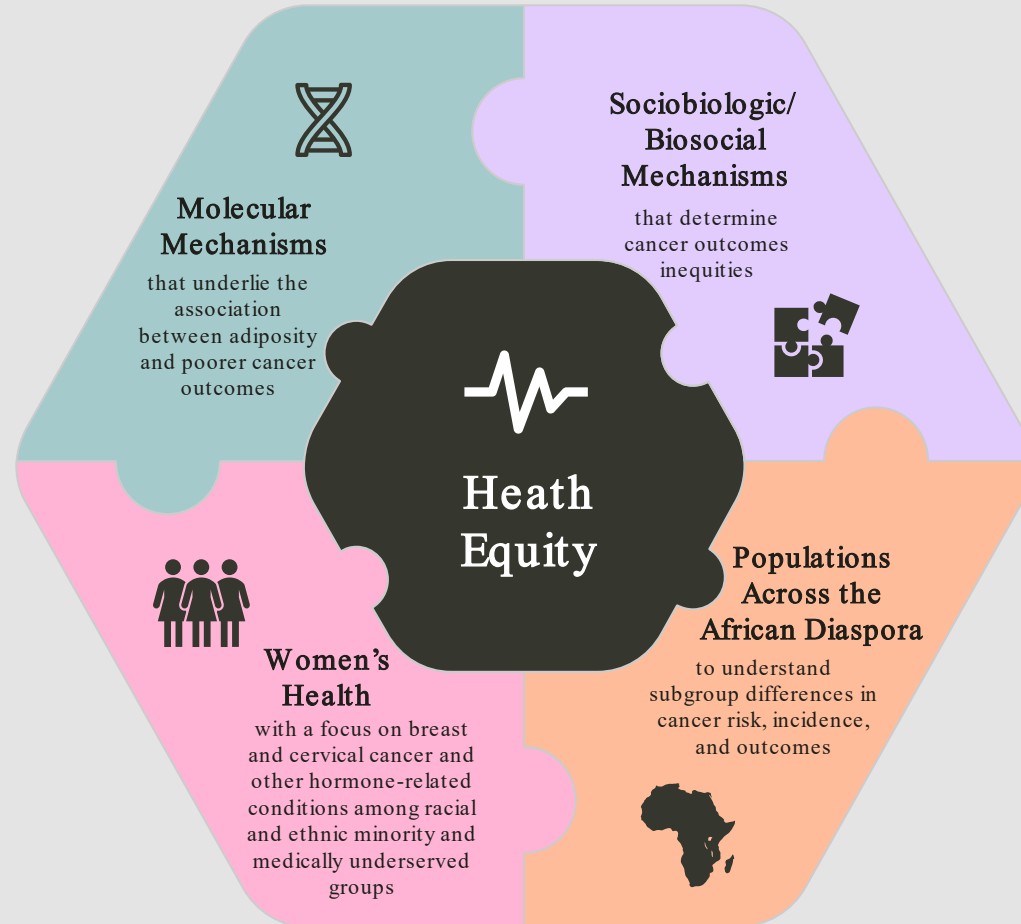
Associate Professor of Epidemiology, Mailman School of Public Health

Co-Leader, Cancer Population Science, Herbert Irving Comprehensive Cancer Center



MULTIDISCIPLINARY RESEARCH PROGRAM

1. **Adiposity and adiposity-associated gene expression in the breast tumor microenvironment in breast cancer outcomes inequities (K01CA193527, R01CA277862)**
2. **Social/structural drivers of health and biological factors on cancer inequities (R01CA274564, R01MD018250)**
3. **Chemical exposures from personal care products – especially hair products – with hormone-related cancer risk (NIEHS pilot, ICAP-HICCC pilot)**





LLANOS LAB





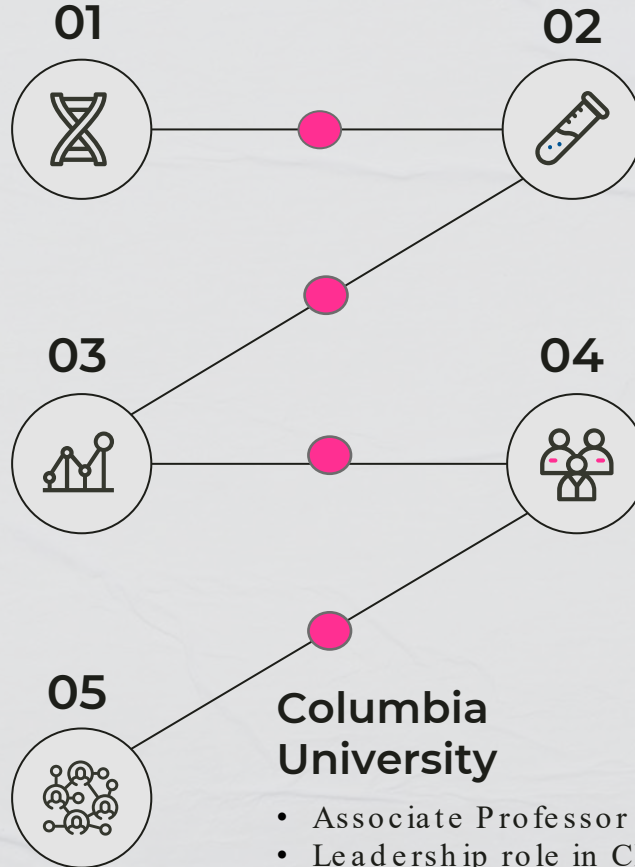
“Know where you want to go
and make sure the right
people know about it.”

—MEREDITH MAHONEY

MY CAREER PATH

Howard University

- BS in Biology
- PhD in Genetics



Lombardi Comprehensive Cancer Center at Georgetown

- Dissertation research in carcinogenesis, biomarkers, and epidemiology lab
- First 2-year post-doctoral fellowship (multidisciplinary)

The Ohio State University

- Second 2-year post-doctoral fellowship (multidisciplinary)
- MPH in Epidemiology

Rutgers University

- Assistant Professor in Epidemiology
- Membership in CPC at Rutgers Cancer Institute

Columbia University

- Associate Professor in Epidemiology
- Leadership role in CPS at HICCC



“Your network is your net
worth.”

—PORTER GALE



BUILD A NETWORK OF CLOSE COLLEAGUES & FRIENDS

- Current and former colleagues who work(ed) in the same place may end up being among your closest friends and professional relationships.
- It is not typically hard to develop a rapport with people you work with.
- Just try to be a decent human being and a genuinely good colleague.

TIMELINE OF LONG - TERM COLLABORATION FRIENDSHIP WITH DR. PLASCAK

2011



Jesse was a PhD student

Adana was a post-doc

2013



Adana started a faculty position at Rutgers

Stayed in touch and published papers together from work we did at OSU

2016



Adana helped recruit Jesse to RUSPH after he completed his post-doc

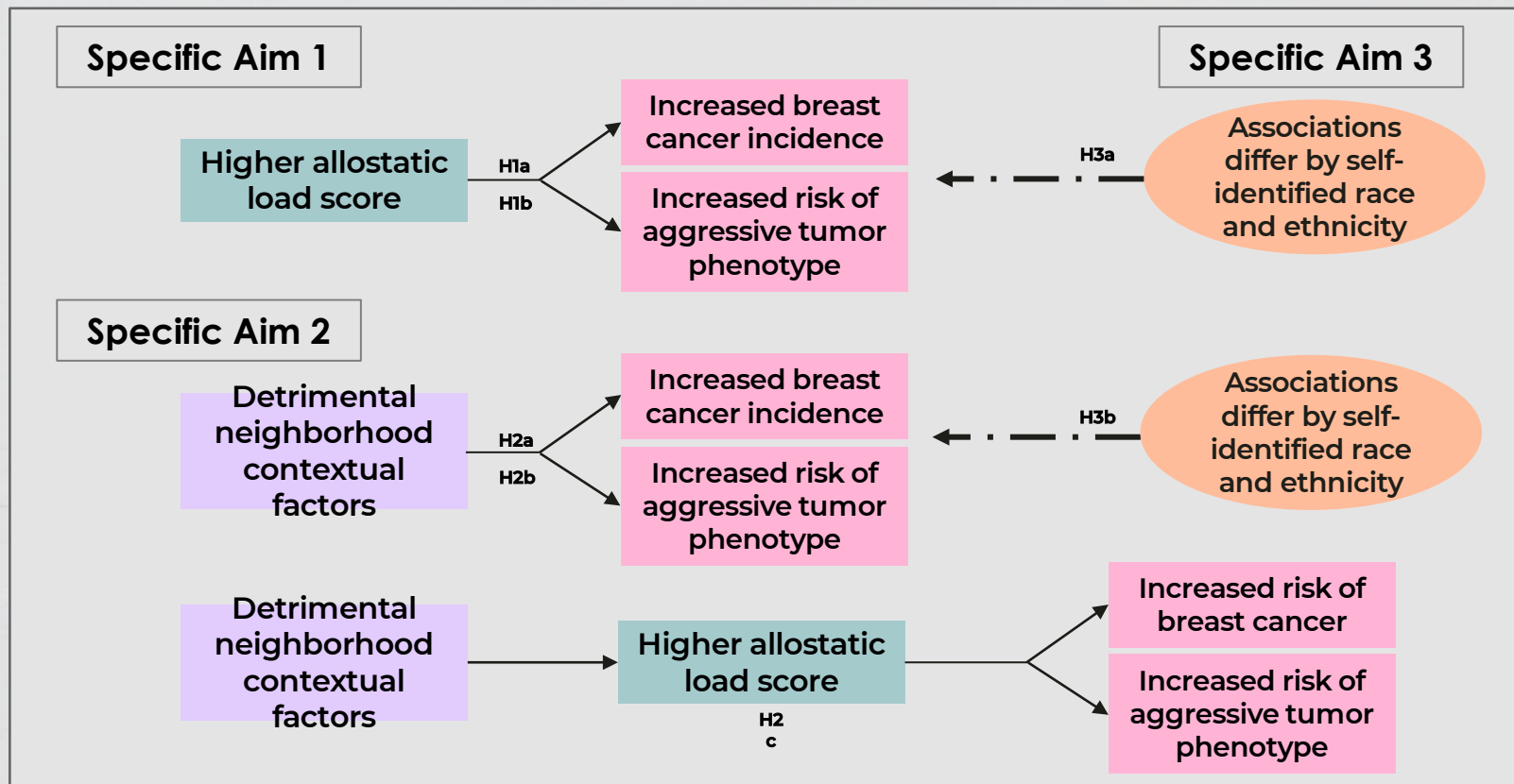
Adana served on Jesse's faculty mentoring committee and as collaborator on WCHS

2022



Adana and Jesse are Co-Is on an NCI-funded R01 and are developing new collaborative projects

ALLOSTATIC LOAD + NEIGHBORHOOD CONTEXT → BREAST CANCER INEQUITIES

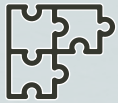




“Networking is not about just connecting people. It’s about connecting people with people, people with ideas, and people with opportunities.”

—MICHELE JENNAE

BUILD & MAINTAIN A STRONG NETWORK



Stay connected, collaborate.



Prioritize the most trusted colleagues and your least transactional relationships – show that you trust and care.



These are often peers, but good to also have more senior (and junior) colleagues you can trust.



Some colleagues become friends – but people have different styles on how close they want to be with colleagues.



“

“Everyone you’ll ever meet knows something you don’t.”

—BILL NYE (“THE SCIENCE GUY”)

THANKS!



al4248@cumc.columbia.edu



[@AdanaLlanos](https://twitter.com/AdanaLlanos)



[https://www.publichealth.columbia.edu/
research-labs/llanos-lab](https://www.publichealth.columbia.edu/research-labs/llanos-lab)

CREDITS: This presentation template was created by [Slidesgo](#), and includes icons by [Flaticon](#), and infographics & images by [Freepik](#)

